

The Industry Origins of the US-Japan Productivity Gap

Dale W. Jorgenson (Harvard University)

Koji Nomura (Keio University)

February 3, 2007

Revised in June 18, 2007

Abstract

This paper presents a comparison of total factor productivity (TFP) levels between the U.S. and Japan for the period 1960-2004 and allocates the gap to individual industries. We carefully distinguish the various concepts of purchasing power parity (PPP) and measure them within the framework of a U.S.-Japan bilateral input-output table. We also measure industry-level PPPs for capital, labor, energy, and materials inputs and output for 42 industries common to the U.S. and Japan, based on detailed estimates for 164 commodities, 33 assets, including land and inventories, and 1596 labor categories.

The U.S.-Japan productivity gap shrank during three decades of rapid Japanese economic growth, 1960-1990. The Japanese manufacturing sector achieved parity with its U.S. counterpart by the end of the period. With the collapse of the Japanese economic bubble at the end of the 1980s, the U.S.-Japan productivity gap reversed course and expanded to 79.5 percent by 2004. This can be attributed to rapid productivity growth in the IT-producing industries in the U.S. during the late 1990s and the sharp acceleration of productivity growth in the IT-using industries in the U.S. during 2000-2004. Wholesale and Retail Trade emerged as the largest contributor to this gap, accounting for 25.1 percent of the lower TFP of the Japanese economy.

JEL Codes: C82, D24, E23.

Keywords: Purchasing Power Parity, Investment, Productivity, Growth.

I. Introduction

The growth of the Japanese economy from 1960 to 1990 far outstripped that of other industrialized economies and inspired the admiration of the world! Japanese GDP grew at 10 percent per year during 1960-1973, nearly quadrupling the size of the Japanese economy. Starting from only 25.5 percent of U.S. GDP per capita in 1960, the Japanese economy made a major leap to 56.7 percent of the U.S. level in 1973. Rapid growth of the Japanese GDP at 4.5 percent per year through 1990 nearly doubled the size of the Japanese economy again, bringing Japanese GDP per capita to 78.3 percent of the U.S.

The rapid closing of 3.7 percent per year in the U.S.-Japan gap in GDP per capita during 1960-1990 was achieved by 2.1 percent annual growth in relative input per capita and 1.6 percent annual reduction in the TFP gap. Japanese input per capita was a very respectable 48.9 percent of the U.S. level in 1960, but more than doubled from 1960-1973, reaching 78.4 percent of the U.S. level in 1973. Japanese input per capita continued to increase rapidly, rising to 91.2 percent of the U.S. level in 1990. The initial U.S.-Japan TFP gap of 52.4 percent in 1960 had closed to only 86.1 percent in 1990.

After the Plaza Accord of 1985 and the bursting of the Japanese bubble economy at the end of the 1980s, the gap in GDP per capita between Japan and the U.S. reversed course, opening by 0.9 percent annually through 2004. Japanese GDP per capita fell to 71.2 percent of the U.S. level in 2000 and 69.5 percent in 2004, below the relative levels of the mid-1980s. Growth of input per capita in Japan slowed considerably, falling to 87.2 percent of the U.S. level in 2000 and remaining almost unchanged at 87.6 percent in 2004. Japanese total factor productivity, relative to the U.S., fell from 86.1 in 1990 to 81.7 in 2000 and 79.5 in 2004, reflecting the sharp acceleration in U.S. TFP growth after 1995 and the more modest recovery of Japanese TFP growth.

The convergence of Japanese economy to U.S. levels of output and TFP has been analyzed in a number of earlier studies – Jorgenson, Kuroda, and Nishimizu (1987), Jorgenson and Kuroda (1990), van Ark and Pilat (1993), Kuroda and Nomura (1999), Nomura (2004, Ch.4), and Cameron (2005). As described in this paper, Japanese TFP for the manufacturing sector was equivalent to its U.S. counterpart in 1990. This paper also investigates the industry origins of the productivity gap between the U.S. and Japan during the period of convergence, 1960-1990, and the period of divergence, 1990-2004.

One of the most important contributions of this paper is to measure detailed purchasing power parities (PPP) between the U.S. and Japanese industries. The various concepts of PPP are carefully distinguished and implemented within the framework of a U.S.-Japan bilateral input-output table.¹ We measure the industry-level PPPs for capital, labor, energy, and materials inputs and output for 42

¹ An alternative approach to constructing PPPs at the industry level is presented by Inklaar and Timmer (2007), *Economic Systems Research*, this issue.

industries common to the U.S. and Japan. These estimates are based on more detailed estimates of a common classification of 164 commodities, 33 assets, including land and inventories, and 1596 labor categories.

In order to trace the U.S.-Japan productivity gap to its origins at the industry level we use two data bases for the U.S. and Japan. These have a closely comparable structure and employ similar national accounting concepts. The U.S. data base is constructed by Jorgenson, Ho, Samuels and Stiroh (2007) and extends the database of Jorgenson, Ho, and Stiroh (2005) backward to 1960 and forward to 2004. We also extend the Japanese data base presented by Jorgenson and Nomura (2005) to 2004. Our common system of industrial classification for the U.S. and Japan distinguishes the IT-producing sectors – Computers, Communications Equipment, and Electronic Components – from other industries.

Section II we present our methodology and data sources for measuring PPPs. Using PPPs for inputs and output of each industry, we compare relative levels of output, inputs, and productivity in Section III. We aggregate these results to obtain relative levels of GDP, capital and labor inputs, and productivity for the U.S. and Japanese economies. Finally, we allocate the productivity gap between the U.S. and Japan by industry over the period 1960-2004. We find that the productivity gap for manufacturing had disappeared by 1990 but re-emerged after 1995. For non-manufacturing the gap was sizable throughout the period. Section IV concludes the paper. The detailed methodology for our U.S.-Japan productivity comparisons is presented in the Methodological Appendix.

II. Measuring Purchasing Power Parities

We estimate the purchasing power parities (PPPs) for capital, labor, energy, and materials (KLEM) inputs by industry. In section i we introduce the common U.S.-Japan industry classification used in this paper. We introduce our measurement of the detailed PPPs for 164 commodities, based on a variety of concepts and a multitude of data sources in Section ii(a). Section ii(b) describes the industry-level PPP for output and intermediate inputs for energy and materials. The industry-level PPPs for capital and labor inputs are presented in sections iii and iv, respectively.

i. Common Industry Classification

Our data for productivity in Japan are based on Jorgenson and Nomura (2005). These data draw on the Keio Economic Observatory (KEO) database maintained at Keio University in Tokyo. We employ the U.S. data presented by Jorgenson, Ho, Samuels, and Stiroh (2007). These extend the database described in detail by Jorgenson, Ho, and Stiroh (2005). The two databases have a closely comparable structure and employ similar national accounting concepts. The cost of capital is used in measuring capital inputs and imputing the value for non-market production of capital services by household and government sectors.

Our first step is to establish a common classification for U.S. and Japanese industries. In our previous U.S.-Japan comparisons – Jorgenson, Kuroda, and Nishimizu (1987), Jorgenson and Kuroda (1990), Kuroda and Nomura (1999), and Nomura (2004, Ch.4) – we have employed a common industry classification with about 30 industries. For this study we have developed a new 42-industry classification that enables us to identify the IT-producing sectors – Computers, Communications Equipment, and Electronic Components.² We quantify the impact of IT production, as well as investment in IT equipment and software, in both the U.S. and Japan. Common classifications for capital and labor inputs are described below.

The public sector is a special challenge in creating a common industry classification. This sector should be separated from private business, although it is difficult to maintain this distinction in practice. In both the U.S. and Japan public sector activities are included in private industries with similar technological characteristics. For example, government-run power authorities are classified as Electric Utilities in both economies. We set the productivity gap between the U.S. and Japan equal to zero for the non-market production of capital services by households and the public sector.

ii. Purchasing Power Parities for Output and Intermediate Inputs

(a) Elementary Level Purchasing Power Parities

There are two approaches to defining PPPs. Using production-side data for domestically produced goods, the PPPs in producer's prices are ratios of average unit prices, each defined as the monetary value over the physical quantity. This approach is especially easy to implement in sectors with outputs defined in physical units, for example, Electricity. On the other hand, PPPs can be estimated from demand-side data by eliminating the wedge between producer's prices and purchaser's prices due to trade and transportation margins and taxes, taking import prices into account.

We employ a hybrid approach developed by Masahiro Kuroda, Kazushige Shimpo, and ourselves. In this paper we have revised the elementary-level estimates of Nomura and Miyagawa (1999). They provide PPPs for 164 commodity groups, estimated from both production-side and demand-side price data within the framework of a U.S.-Japan bilateral input-output table.³ Since a number of the key papers

² Our new industry classification eliminates important inconsistencies in our earlier studies. For example, Jorgenson and Kuroda (1990) and Kuroda and Nomura (1999) included Computers in Machinery in the U.S. and Electric Machinery in Japan. The two machinery industries were compared without recognizing this difference. Nomura (2004) combined the two machinery industries into a single industry and avoided this inconsistency. We provide a more detailed classification that treats Computers as a separate industry.

³ Nomura and Miyagawa (1999) considerably revised the methodology and estimates in the preceding studies of the Japan Industrial Policy Research Institute (1994) "Studies on New Estimates of PPP" and (1996) "Studies on the International Input-Output Table", both implemented as joint projects of the METI and Keio University and published in Japanese.

describing the hybrid approach have been published only in Japanese, we first outline the methodology and then discuss the data sources for our PPPs.

Our measurement of elementary level PPPs is based on the 1990 U.S.-Japan Bilateral Input-Output (I-O) Table, published by Ministry of Economy, Trade and Industry (METI) in 1997. We postulate a price model describing the relationships among producer's prices and purchaser's prices for domestically produced and imported goods. The U.S.-Japan trade structure in the 1990 Bilateral I-O Table maintains consistent price differences between the two economies, considering differences in freight and insurance rates, duty tax rates, wholesale and retail trade margins, transportation costs (railway, road, water, air, and others), and import shares of each commodity in the U.S. and Japan.⁴ Using demand-side data for purchaser's price PPPs for final demands, we estimate the producer's price PPPs for domestically produced goods, based on our price model and related parameters. Also, using production-side data for PPPs in producers' prices, we estimate PPPs for composites of domestically produced and imported goods by inverting the price model.

One of the difficulties in estimating PPPs in producer's prices from demand-side data is to define PPPs for imported goods. These are required to separate PPPs for domestically produced commodities from composite PPPs for commodity groups that include imports.⁵ Using the U.S.-Japan bilateral I-O Table, goods purchased in Japan can be separated into domestically produced goods, goods imported from the U.S., and goods imported from the Rest of the World (ROW). The purchaser's prices in Japan for goods imported from the U.S. can be linked to prices of domestically produced goods in the U.S., taking into consideration the costs of freight and insurance required for shipment from the U.S. to Japan and duties levied by Japanese customs. Similarly, import prices in the U.S. can be linked to domestic output prices in Japan.

The most comprehensive demand-side data are the Eurostat-OECD Purchasing Power Parities. Price differences are defined as the gaps between purchaser's prices, including wholesale and retail margins for final demands. These prices reflect not only the prices of domestically produced goods but also imported goods. We assume that prices of imports into Japan from the U.S. are sums of producer's prices in the U.S., freight and insurance costs, customs duties, margins for wholesale and retail trade, and

⁴ The data for freight and insurance rates and duty tax rates by commodity are available as supplementary tables of the 1990 US-Japan Bilateral I-O Table. We used the 1992 U.S. Use Table from the Bureau of Economic Analysis (BEA) and the 1990 Japan Benchmark I-O Table (Ministry of Internal Affairs and Communications, MIC) for rates of wholesale and retail margins and transportation costs by commodity in each of final demand and intermediate demand. These rates are aggregated in both countries to correspond to the 164 commodities.

⁵ Trade statistics may provide rough estimates for defining PPPs for imported goods as ratios of nominal values to physical quantities. We use the trade statistics only for energy inputs like crude oil, coke, and LNG; we employ the trade statistics for both economies and "Energy Prices and Taxes" published by IEA.

transportation costs. We also assume that the import prices from the ROW are same as the composite prices of domestic goods and goods imported from the U.S. Given these assumptions, we determine the two relative prices for domestically produced goods and composite goods simultaneously within the framework of the U.S.-Japan bilateral I-O Table.

Another difficulty in estimation of PPPs from demand-side data is the absence of price comparisons for goods not purchased as final demands. For example, the price for an intermediate good like semiconductors plays a significant role in our U.S.-Japan productivity comparisons. In order to supply the missing information, METI has carried out a Survey on Disparities between Domestic and Foreign Prices of Industrial Intermediate Inputs. By contrast with the Eurostat-OECD PPPs, this survey targets only intermediate goods. Price differences are defined as purchaser's prices, including the difference in wholesale and (sometimes) retail margins for intermediate goods in each economy. Using these data, the PPPs for domestically produced goods can be estimated on the basis of our price model.

There are relatively rich data sources for U.S.-Japan price comparisons. In addition to the two large-scale investigations by Eurostat-OECD and METI, a number of surveys have been implemented by Japanese ministries and agencies in the 1990s. This reflects the increasing policy interest in U.S.-Japan price differences, resulting from strengthening the Japanese yen, relative to the U.S. dollar, after the Plaza Accord of 1985. We have used PPP data for consumer goods (METI, Cabinet Office), transportation and related services (Ministry of Land, Infrastructure and Transport, MLIT), residential buildings and infrastructure (MLIT), medicine and medical equipment (Ministry of Health, Labour and Welfare, MHLW), barber services, beauty treatments, cleaning, and movies (MHLW), living expenses (Cabinet Office), food and restaurants (Ministry of Agriculture, Forestry and Fisheries, MAFF), wood products (Forestry Agency), cellular phones and car phones (Ministry for Internal Affairs and Communications, MIC), whiskey (National Tax Agency). These data are estimated for different years and different stages of demand. We have reconciled these data within a bilateral I-O framework, taking into account the differences in timing of the surveys.

For computer hardware and software we have used new data from the IDC survey implemented during 1999-2002.⁶ In addition, we have investigated U.S.-Japan price differences for matched models of

⁶ In this sample survey prices are distinguished by vendor, brand, and processor. The results are reported in New Media Development Association (2002) "Survey of Price Differences between the U.S. and Japan for Purchasing IT Goods and Services". Using the sample prices in this survey, the geometric average of the U.S.-Japan relative prices are 0.84 (2001.Q3) and 0.97 (2001.Q4) for desk-top PC's, 1.00 (2001.Q3) and 1.15 (2001.Q4) for lap-top PC's, 1.23 (1999) for servers, and 1.00 (2002) for database software.

representative prepackaged software and personal computers that can be purchased on the internet.⁷ Based on sample prices for computer hardware and software, the Japanese price is almost the same as the U.S. price; however, the Japanese price is somewhat higher than the U.S. price for servers. We have converted these prices to base-year PPPs for 1990, using the price indexes for each component from our databases for the U.S. and Japan, described in Jorgenson and Nomura (2005).

(b) Industry-Level Purchasing Power Parities

After determining the elementary level PPPs, we have estimated five PPPs for each of 164 commodities: (1) a producer's price PPP for domestically produced goods, excluding net indirect taxes, (2) a producer's price PPP for composite goods sold to households, (3) a producer's price PPP for composite goods sold to industry, (4) a purchaser's price PPP for composite goods sold to households, and (5) a purchaser's price PPP for composite goods sold to industry.⁸ For the purpose of bilateral comparisons of productivity, the PPP estimates (1), (3), and (5) are used as the elementary-level PPPs for output, intermediate inputs, and the acquisition of investment goods, respectively.

We aggregate the 164 elementary level PPPs into the 42-industry PPPs for output, using the translog index in Equation (15) of the Methodological Appendix. The weights are the average shares of each industry's output in the two economies in the 1990 U.S.-Japan Bilateral I-O Table. Similarly, industry-level PPPs for intermediate inputs are translog indexes, using the average shares as weights.⁹ The relative prices for non-market production in the government and household sectors are set equal to unity in order to make the U.S.-Japan productivity gap equal to zero in these sectors.

iii. Purchasing Power Parities for Capital Inputs

(a) Purchasing Power Parities for Investment

In the Methodological Appendix, we define elementary-level prices for capital inputs. The unit price of capital input of asset i in economy c , $Q_{ij}^{K,c}$ is defined in Equations (4) and (5) in the Appendix.

We summarize the formulation for the price of capital input as:

$$(1) \quad \hat{P}_{ijt}^{K,c} = \phi_{ijt}^c \hat{P}_{ijt}^{A,c},$$

⁷ Based on our investigation on sample prices for Microsoft Windows XP, Excel, Word, PowerPoint, and Office and Adobe Acrobat, the geometric average relative price is 1.09 in November 2005.

⁸ If alternative data for price discrepancies are available for a commodity, regardless of the stage of demand, we finally have to choose one PPP. We follow Nomura and Miyagawa (1999) in choosing the PPP that provides the best approximation to production activities in the U.S. and Japan by comparing aggregate measures of input coefficients evaluated at constant prices.

where $\hat{P}_{ijt}^{A,c}$ represents the unit cost for acquisition of one dollar's worth of assets. The coefficient ϕ_{ijt}^c is an annualization factor that transforms the cost of acquisition into the price of capital services. Defining the PPP for the cost of acquisition as described in ii(b), the PPP for capital input is defined as:

$$(2) \quad PPP_{ijt}^K = \frac{\phi_{ijt}^J}{\phi_{ijt}^U} PPP_{ijt}^A.$$

The key to measuring the PPP for capital input is the relative value of annualization factor and the PPP for the acquisition of assets.

Our first step in measuring PPPs for capital inputs is to construct a common asset classification for the U.S. and Japan. We define a 33-asset classification, consisting of 29 tangible assets, two intangible assets (mineral exploration and software), inventories, and land. To measure PPPs for the acquisition of each asset, we construct translog indexes of the purchaser's price PPPs for the composite goods by industry. These indexes are based on our estimates for elementary level PPPs for the 164 commodities described above. The PPPs for acquisition of inventories are assumed to be the average of PPPs for acquisition of tangible assets, except for buildings and construction.

The difference in land prices between the U.S. and Japan has a substantial impact on the PPPs for capital inputs, as pointed out by Nomura (2004, Ch.3). Nomura indicates that Japan's acquisition price of land for commercial and industrial uses was 9.1 times higher than that in the U.S. in 1990. The price for capital acquisition in Japan is 2.9 times higher than that in the U.S. in 1990 if we include land in capital input, but only 24 percent higher in Japan if land is excluded. We employ the higher estimates, including the PPP for land. It has been neglected in our previous measurement of TFP gap between the U.S. and Japan, although the capital input of land has been counted in TFP measures in both countries.

(b) Purchasing Power Parities for Capital Input

The final step in measuring PPPs for capital inputs is to determine the relative value of the annualization factors between the U.S. and Japan for each asset and each industry. A novel feature of our data sets for the U.S. and Japan is that the annualization factors are measured on the basis of comparable formulations of the price of capital input, assuming asset-specific revaluations for all assets and endogenous rates of return for each industry. Tax considerations are a key component of the prices of

⁹ In our comparison, we treat all inputs of energy purchased by the energy conversion sectors – Petroleum Refining, Electricity, and Gas Supply – as materials inputs, not energy inputs.

capital inputs.¹⁰ The measurement of capital services is described by Jorgenson, Ho, and Stiroh (2005, Ch.5) for the U.S. and Nomura (2004, Ch.3) and Jorgenson and Nomura (2005) for Japan. The annualization factors are estimated for 59 assets in 36 industries in the U.S. and 103 assets in 47 industries in Japan. The estimates are aggregated into measures for the 33-asset U.S.-Japan common asset classification in each industry. Including land as a capital input, the aggregate PPP for acquisition of capital goods is 2.9 in 1990, but the aggregate PPP for capital input is only 1.6, reflecting lower annualization factors in Japan.

iv. Purchasing Power Parities for Labor Inputs

We assume that hours worked can be used to approximate one dollar's worth of labor input for each category of labor at the elementary level. Thus, L_{ijt}^c and \hat{L}_{ijt}^c in Equation (4) in the Methodological Appendix represent labor input and hours worked, respectively. Also, $P_{ijt}^{L,c}$ and $\hat{P}_{ijt}^{L,c}$ in Equation (5) are the price indexes for labor input and average hourly labor compensation, respectively. Labor quality $Q_{ij}^{L,c}$ is given by base-year average hourly labor compensation.

To define PPPs for labor inputs, we follow Nomura and Samuels (2003), revising the estimates to conform to our common U.S.-Japan industry classification.¹¹ For both U.S. and Japanese data sets the labor inputs are cross-classified by sex, age, education, class of worker, and industry. The U.S.-Japan common labor classification system allows us to compare wages of similar workers. After classifying the workers by sex, we split the workers by the other categories – industry, age, class of worker, and education. The U.S. data set has eight age classifications for workers and Japan has eleven. We choose a common classification of six age groups – under 24 years old, 25-34, 35-44, 45-54, 55-64, and over 65 years of age.

In both economies workers are classified as employed or self-employed and unpaid family workers. However, labor compensation for the self-employed and unpaid family workers is estimated differently in the U.S. and Japan. In the U.S. data the hourly wage of self-employed and unpaid family workers is set equal to the hourly wage of the employed. Hours worked times this wage yields an estimate of labor compensation for self-employed and unpaid family workers. In the Japanese data wage rates of self-employed workers are available for selected industries that yield an estimate of labor compensation

¹⁰ In measuring capital input in Japan, capital consumption allowances, income allowances and reserves, special depreciation, corporate income tax, business income tax, property taxes, acquisition taxes, debt/equity financing, and personal taxes are taken into account.

for the self-employed group. The wage differential between self-employed and unpaid family workers is estimated from the differential between full-time and part-time employees. Because of these differences, we consider only employed workers when measuring the PPPs for labor input.

In the Japanese data there are different levels of detail for the educational attainment of male and female workers. Male workers are divided among four educational groups, while female workers are split into three. In the common data set we use the most detailed classification available in the Japanese data. After cross-classifying the data by all the demographic characteristics, we have 1596 groups in total, 912 groups of male employees and 684 groups of female employees. We calculate the industry-level PPP for labor inputs as the translog index of the elementary-level PPPs.

III. Empirical Results

i. Purchasing Power Parities

We summarize our estimates of PPPs in terms of gross domestic product (GDP) and capital, labor, and intermediate inputs. For each industry the PPP for value added is defined by the double deflation method, using industry-level PPPs for gross output and intermediate inputs. We define the PPP for GDP as a translog index of the industry-level PPPs for value added, taking the weight changes over periods into account. Similarly, the PPPs for the capital, labor, energy, and materials (KLEM) inputs are defined as translog indexes of industry-level PPPs for these inputs.

Table 1 presents our estimates of PPPs for Japan. For 2004 our estimate for GDP is 133.9 yen/dollar; this implies that a unit of GDP costing one dollar in the U.S. was valued at 133.9 yen in Japan. Since one U.S. dollar exchanged for 108.2 yen, Japan's price for GDP was 23.8 percent higher than the U.S. price. Our PPP estimates are based on outputs, while the Eurostat-OECD PPPs presented in Table 1 are based on expenditures.¹² According to the Eurostat-OECD estimate, the Japanese price of GDP in 2004 was 23.6 percent higher than the U.S. price. Although the two PPP estimates are nearly identical in 2004, our output-based estimates are higher than the expenditure-based estimates for 1960 and 1973 and lower for the period 1985-2000.

¹¹ Due to data constraints, we establish a common industry classification for 38 U.S. and Japanese industries to calculate PPPs for labor inputs.

¹² Organisation for Economic Co-operation and Development (2006), *GDP PPPs and Derived Indices for all OECD Countries*, Paris, OECD, December.

Table 1: PPP and Relative Prices for GDP and KLEM

	1960	1973	1985	1990	1995	2000	2004
PPP							
GDP-output based	201.9	258.8	199.1	181.0	167.5	151.9	133.9
Capital	248.9	326.2	242.4	233.1	172.3	157.4	143.9
Labor	50.0	122.8	121.0	115.4	118.8	105.0	85.5
Energy	563.9	478.8	410.9	296.2	267.8	238.6	242.5
Material	256.2	269.0	220.4	186.7	165.4	154.7	143.7
(ref)GDP-expenditure based	170.6	231.2	205.9	189.2	175.5	154.9	133.7
Exchange Rate	360.0	271.8	238.5	144.8	94.1	107.8	108.2
Relative Prices							
GDP-output based	0.56	0.95	0.83	1.25	1.78	1.41	1.24
Capital	0.69	1.20	1.02	1.61	1.83	1.46	1.33
Labor	0.14	0.45	0.51	0.80	1.26	0.97	0.79
Energy	1.57	1.76	1.72	2.05	2.85	2.21	2.24
Material	0.71	0.99	0.92	1.29	1.76	1.44	1.33
(ref)GDP-expenditure based	0.47	0.85	0.86	1.31	1.87	1.44	1.24

Note: The PPP for GDP-output based is defined as a translog index of industry-level PPP for value added calculated by the double deflation method. The PPP for GDP-expenditure based is the estimates by the Eurostat-OECD. The PPP and exchange rate are defined by Japanese yen/ US dollar.

Figure 1 represents the long-term trends of PPPs for GDP and the KLEM inputs. The yen-dollar exchange rate is drawn as a shadow figure. If the PPP is higher than the shadow figure, the Japanese price is higher than the U.S. price. Until the mid-1970s, the Japanese price for GDP was lower than the U.S. price and Japanese input prices were lower than the U.S. prices, except for energy. Lower input prices provided a source of international price competitiveness for Japanese products in the 1960s and 1970s.

The Plaza Accord of 1985 was a crucial turning point for the Japanese economy. In 1985 the yen was undervalued by about 17 percent, based on a comparison between our output-based PPP for GDP and the yen-dollar exchange rate. In the late 1980s the rapid strengthening of the yen relative to the U.S. dollar reversed this relationship, leading to an overvaluation of the yen by 25 percent in 1990. The revaluation of the yen continued through 1995, leading to an overvaluation of 78 percent! This was followed by a gradual devaluation through 2004, leaving the yen overvalued by 24 percent, very close to the 1990 level.

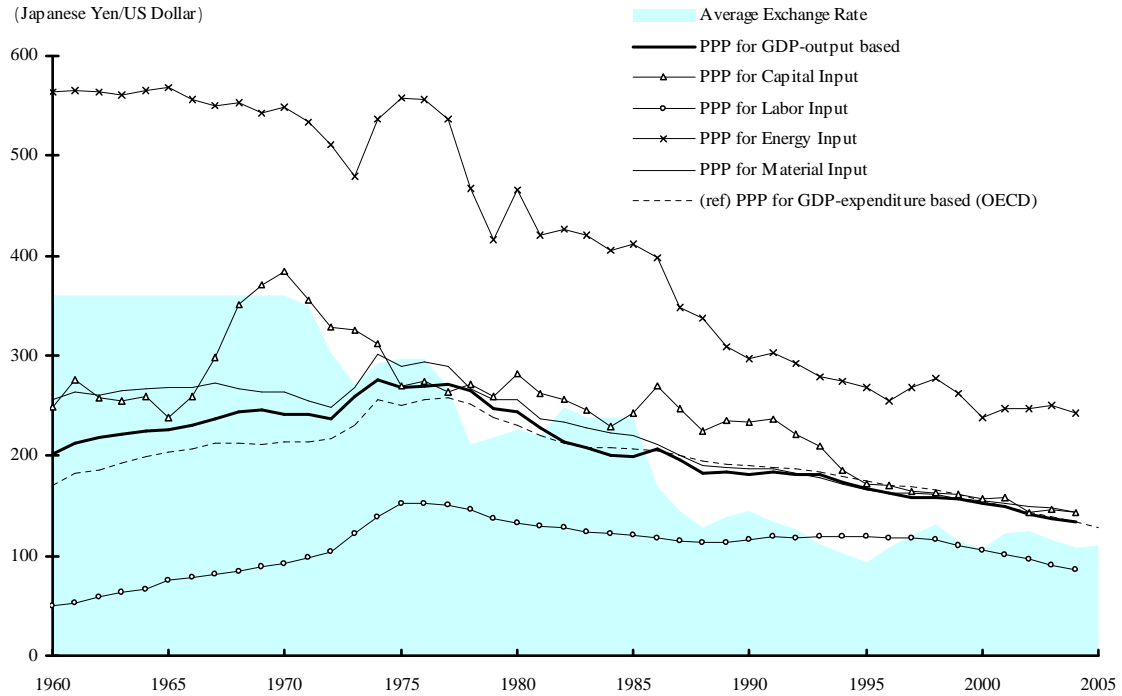


Figure 1: PPP for GDP and KLEM during 1960-2004

The Japanese economy spent more than a decade overcoming the huge overvaluation of the yen that followed the Plaza Accord. This was accomplished mainly by domestic deflation, rather than devaluation of the yen. The price of GDP in Japan, relative to the U.S., declined by four percent annually through 2004 from the peak attained in 1994. The decline in the PPP for GDP at 2.5 percent per year was the result of modest inflation in the US of 1.4 percent and deflation in Japan of 1.1 percent. In addition, the yen-dollar exchange rate fell by 1.5 percent per year.

Figure 2 presents industry-level relative prices for value added and industry origins of the gap in the PPP of 181.0 yen per dollar of the output-based GDP in 1990. The Japanese price for value added was lower than the U.S. price in sixteen industries, while the Japanese price for gross output was lower in only ten industries. Even if the relative price for gross output is greater than unity, the relative price for value added can be less than unity as a consequence of high prices of energy and materials inputs in Japan. The Household sector produces services of owner-occupied dwellings and consumer durables and made the greatest contribution to the PPP for GDP in 1990. This reflects high prices of buildings and land in Japan and the large share of value added by the Household sector. Electricity, which is very expensive in Japan, pushed up the Japanese PPP by 2.2 percent.

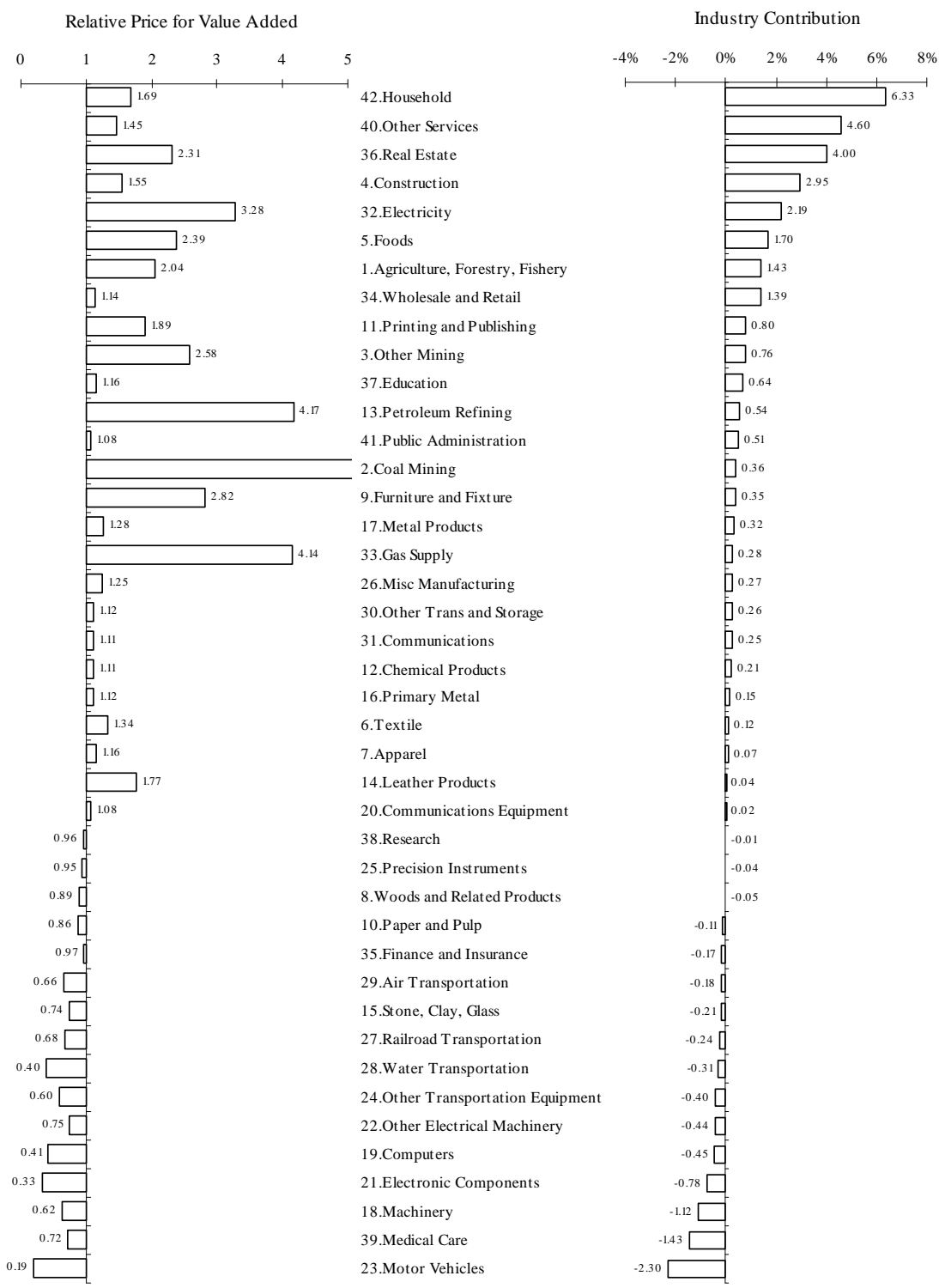


Figure 2: Industry Origins of PPP-for-GDP Gap in 1990

ii. Economic Growth in the U.S. and Japan

Table 2 summarizes our empirical results on economic growth and its sources for the U.S. and Japanese economies. Despite the long economic recession in Japan, beginning in the early 1990s, rapid technological progress in the IT-producing industries diffused quickly through investment in information technology (IT) equipment and software by the IT-using industries. Jorgenson and Nomura (2005)¹³ have discussed these findings through 2000 in greater detail. Table 2 shows that the trends they identified have continued through 2004. Japanese economic growth slowed further after 2000, but the contribution of IT-capital input continued to rise.

The annual rate of total factor productivity (TFP) growth in Japan improved from 0.48 percent per year in 1995-2000 to 0.57 percent during 2000-2004. The contribution of labor input was negative in both periods, but rose slightly from -0.19 to -0.15. The contribution of Non-IT-capital input in Japan dipped substantially from 1995-2000 to 2000-2004, accounting for the slowdown in Japanese economic growth. Despite this slowing trend, the contribution of investment in IT capital accelerated. The contribution of IT to the growth of capital input expanded from 13.9 percent in 1990-1995 to 31.2 percent during 1995-2000, and reached 51.6 percent for the period 2000-2004, considerably exceeding the U.S. contribution of 43.1 percent in that period.

Expanding labor input was an important source of U.S. economic growth during 1960-2000, but this ended abruptly with the dot-com crash of 2000. Labor input declined at the rate of 0.17 percent per year during 2000-2004. Another significant change in the U.S. economy after 2000 was the substantial increase in the contribution of TFP growth and the shift in its industry origins. The annual growth rate of TFP during 2000-2004 was 1.27 percent per year, close to twice the growth rate of the late 1990s and 2.7 times the long-term average growth rate during 1960-2000 of 0.46 percent.

¹³ We have extended the Japanese data used in Jorgenson and Nomura (2005) through 2004. In addition, we have revised the data after 1995 to incorporate the *Annual Report on National Accounts* (Economic and Social Research Institute, Cabinet Office) published in May 2006. This report is the first to include the 2000 benchmark revision. Second, we have revised the imputed cost for owner-occupied housing. In the Japanese national accounts, the estimation method for the cost of owner-occupied housing was substantially improved in the 2000 benchmark. As a consequence, the imputed cost was reduced from 49.9 trillion yen in 2000, based on the 1995 benchmark, to 42.8 trillion. Third, we have revised the allocation of land for dwellings between the Household and the Real Estate industries, based on estimates by Hideyuki Mizobuchi. Finally, we have introduced new estimates for work-in-progress inventories for cultivated assets as a capital input, consistent with the recommendation of the 1993 SNA. The values for the inventory stock on cultivated assets estimated by Nomura are 3.3, 8.6, and 3.9 trillion yen at current prices as of the end of 1960, 1980, and 2000, respectively.

Table 2: Sources of Economic Growth in the U.S. and Japan

	1960-73	1973-90	1990-95	95-2000	2000-04	1960-2004
United States						
Value Added	3.90	2.83	2.35	4.12	2.56	3.21
Capital Input	1.81	1.59	1.19	2.14	1.46	1.66
IT Capital	0.21	0.41	0.49	0.97	0.63	0.44
Non-IT Capital	1.60	1.18	0.70	1.16	0.83	1.22
Labor Input	1.29	1.08	0.81	1.29	-0.17	1.02
Total Factor Productivity	0.81	0.17	0.35	0.69	1.27	0.54
Agriculture	0.00	0.13	0.03	0.07	0.10	0.07
IT-manufacturing	0.09	0.20	0.27	0.48	0.04	0.19
Motor Vehicle	0.02	0.00	-0.01	0.02	0.06	0.01
Other manufacturing	0.52	-0.02	0.11	0.21	0.04	0.19
Communications	0.01	0.06	-0.01	-0.04	0.07	0.03
Trade	0.17	0.15	0.07	0.15	0.51	0.18
Finance & Insurance	-0.05	0.01	0.04	0.11	0.30	0.03
Other services	0.04	-0.37	-0.14	-0.30	0.15	-0.17
Japan						
Value Added	10.00	4.50	1.31	1.31	1.14	5.10
Capital Input	4.95	2.19	1.93	1.02	0.72	2.71
IT Capital	0.22	0.26	0.27	0.32	0.37	0.27
Non-IT Capital	4.72	1.93	1.66	0.70	0.35	2.44
Labor Input	1.75	1.12	-0.16	-0.19	-0.15	0.90
Total Factor Productivity	3.30	1.18	-0.46	0.48	0.57	1.48
Agriculture	0.20	0.00	0.06	-0.01	-0.04	0.06
IT-manufacturing	0.17	0.21	0.09	0.42	0.35	0.22
Motor Vehicle	0.28	0.13	0.00	0.02	0.11	0.14
Other manufacturing	1.78	0.41	-0.33	0.17	0.08	0.68
Communications	0.07	0.05	0.07	0.12	0.08	0.07
Trade	0.94	0.28	0.01	-0.13	-0.03	0.37
Finance & Insurance	0.23	0.10	-0.22	0.15	0.04	0.10
Other services	-0.36	0.01	-0.14	-0.26	-0.03	-0.15

Note: All figures are average annual growth rates. Value added is aggregated from industry GDPs evaluated at the factor cost.

Perhaps surprisingly, the substantial improvement in U.S. TFP growth between 1995-2000 and 2000-2004 was achieved by a wide variety of IT-using industries rather than the IT-producing sectors as discussed more in detail in Jorgenson, Ho, Samuels, and Stiroh (2007). The TFP contribution by the IT-manufacturing sector was only 0.04 percent, a precipitous drop from 0.48 percent during 1995-2000. By contrast the TFP contributions in communications, trade, and finance and insurance improved by 0.11, 0.36, and 0.19 percent points, respectively. Also, the negative contribution of -0.30 percent per year in other services during the late 1990s gave way to a positive 0.15 percent after 2000.

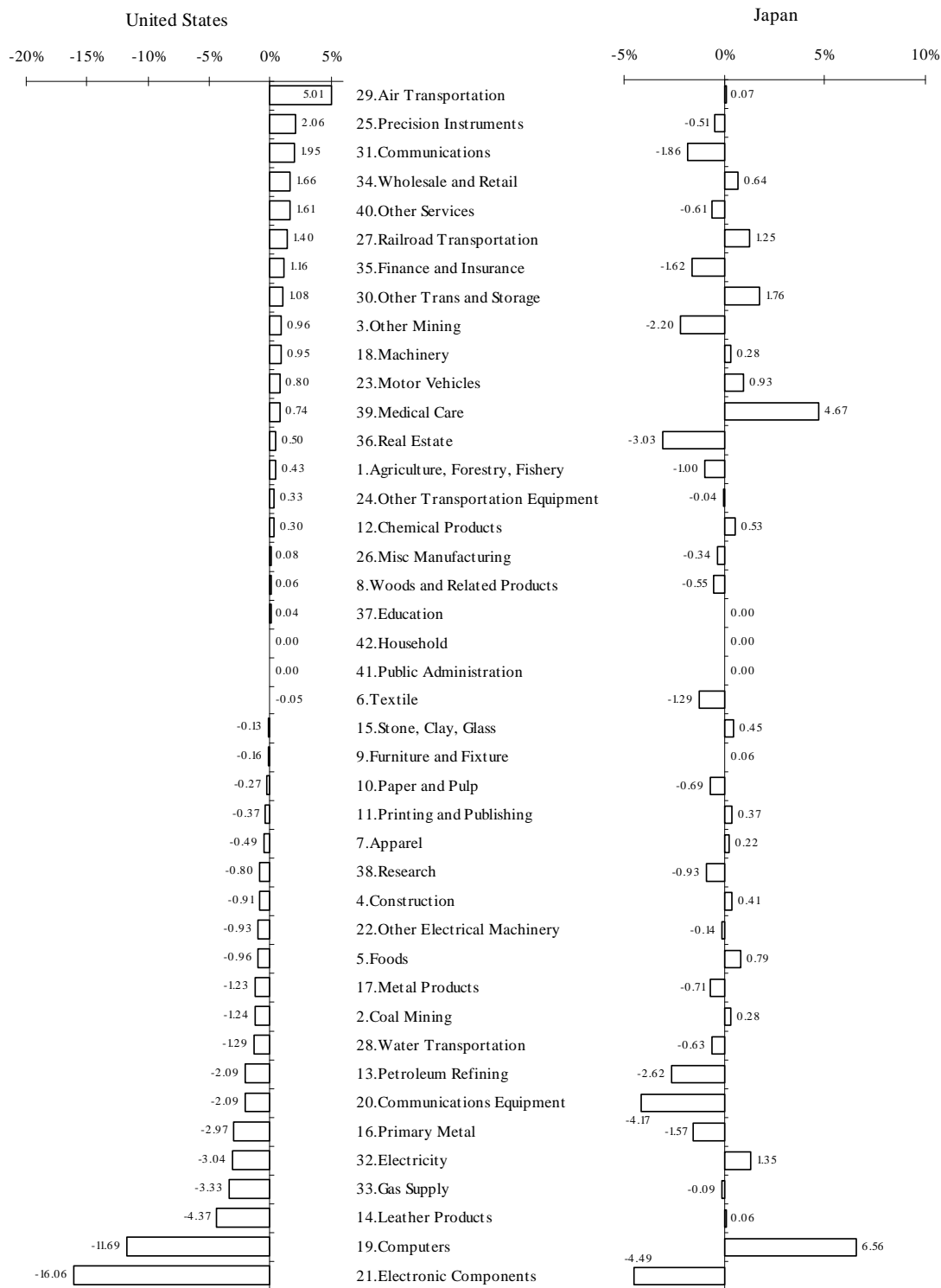


Figure 3: Changes in Growth of Industry TFP: 2000-2004 less 1995-2000

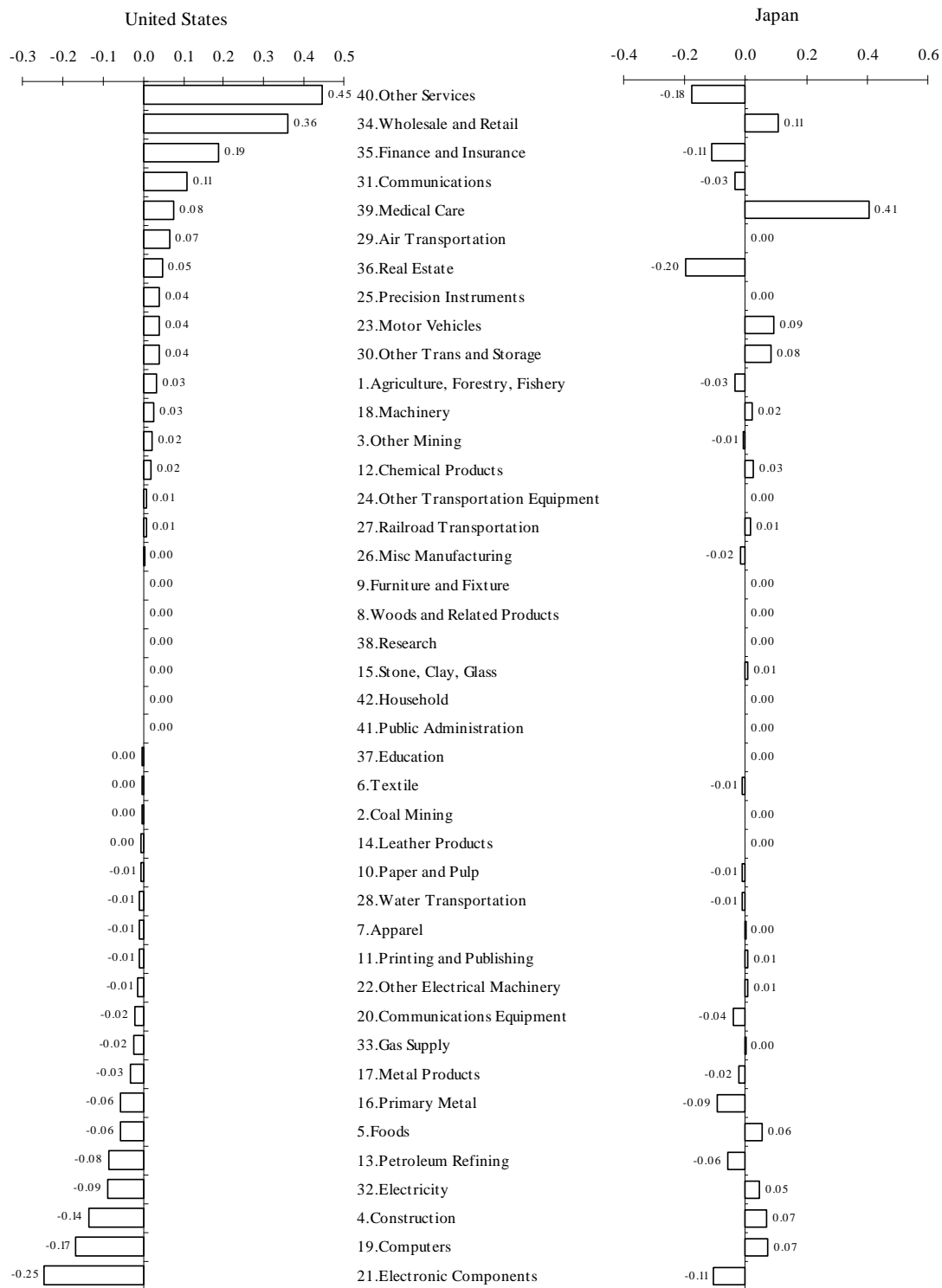


Figure 4: Changes in Contribution of Industry TFP to Economic Growth: 2000-2004 less 1995-2000

Figures 3 and 4 compare industry-level TFP growth and contributions to economic growth between the periods 1995-2000 and 2000-2004. In the key IT-producing sectors, Electronic Components and Computers, TFP growth in the U.S. slowed by more than ten percentage points. The improvement of TFP growth in the IT-using sectors seems modest by comparison with improvements of 1.9 percentage points in Communications, 1.7 in Wholesale and Retail Trade, 1.6 points in Other Services, and 1.2 points in Finance and Insurance. However, as shown in Figure 4, these industries made substantially increased contributions to the U.S. economic growth, reflecting their large Domar weights, as presented in Equation (24) of the Methodological Appendix.

The resurgence of U.S. economic growth during 1995-2000 was powered by an acceleration of TFP growth in the IT-producing industries and a resulting surge of investment in IT capital by the IT-using sectors. After 2000 productivity growth plummeted in the IT-producing sectors, but greatly accelerated in the IT-using industries. The end of the investment boom of the late 1990s with the dot-com crash of 2000 resulted in a substantial fall in the contributions of investment in IT- and non-IT-capital inputs after 2000. The growth of labor input plunged by two full percentage points!

There was no resurgence of Japanese economic growth during 1995-2000; however, the contribution of TFP revived during this period and rose further during 2000-2004. The contribution of TFP in IT-manufacturing in Japan rose from 0.09 per year in 1990-1995 to 0.42 percent during 1995-2000, before receding to 0.35 percent after 2000, well above the U.S. contribution of 0.04 percent. The contribution of investment in IT-capital input rose steadily from 0.27 percent per year in 1990-1995 to 0.32 percent in 1995-2000 and 0.37 percent after 2000.

iii. Level Comparisons of Output, Input, and Productivity

Table 3 summarizes the productivity gap between the U.S. and Japan. This table compares relative levels of output, output per capita, input per capita, and total factor productivity between the two economies over the period 1960-2004. Differences in output per capita can be decomposed into differences in input per capita and TFP, the ratio of output to input. For example, Japanese GDP was 30.2 percent of the U.S. level in 2004. GDP per capita in Japan was 69.5 percent of U.S. GDP per capita, while Japanese input per capita was 87.6 percent and Japanese TFP was 79.5 percent of the corresponding U.S. levels.

Table 3: Relative Levels of Output, Input, and Total Factor Productivity

	1960	1973	1980	1990	1995	2000	2004
Output	13.2	29.2	32.7	38.7	36.8	32.0	30.2
Output per Capita	25.5	56.7	63.6	78.3	78.0	71.2	69.5
Input per Capita	48.9	78.4	84.5	91.2	94.6	87.2	87.6
Total Factor Productivity	52.4	72.5	75.4	86.1	82.6	81.7	79.5

Note: All figures present the relative values (Japan/U.S.) in each period.

In Table 4 we compare levels of per capita capital and labor inputs in Japan and the U.S. These are the two sources of differences in input per capita in Table 3. Japanese labor input per capita in 1960 was only slightly below the U.S. level and Japan has led in labor input per capita since 1973. Japan maintained a lead in hours worked per capita throughout the period 1960-2004, despite a gradual decline after 1973 that accelerated sharply during the 1990s. The U.S.-Japan gap in labor quality, defined as labor input per hour worked, was 78.1 percent in 1960. This gap gradually closed during the three decades of rapid Japanese growth, ending in 1990. Japan overtook the U.S. in labor quality in 1995 and has maintained its lead through the past decade. This reflects the attainment of high average levels of education in Japan, as well as gains in the experience of the Japanese labor force.

Table 4: Relative Quantities and Qualities of Capital and Labor

	1960	1973	1980	1990	1995	2000	2004
Capital Input per Capita	23.2	50.0	58.1	65.4	74.0	68.5	66.2
Capital Stock per Capita	38.0	52.4	58.3	65.0	71.2	71.8	70.6
Capital Quality	61.2	95.4	99.7	100.6	104.0	95.5	93.8
Labor Input per Capita	93.8	109.7	111.9	116.1	112.0	103.2	106.8
Hours Worked per Capita	120.2	132.4	121.2	117.6	111.7	102.2	105.8
Labor Quality	78.1	82.9	92.4	98.8	100.3	101.0	100.9

Note: All figures present the relative values (Japan/U.S.) in each period.

Japanese capital input, relative to the U.S., presents a striking contrast to labor input. In 1960 Japanese capital input per capita was only 23.2 percent of the U.S. level, but staggering levels of investment in Japan during the double-digit growth of 1960-1973 reduced the gap to 50.0 percent by 1973. The gap continued to close through 1995, when Japanese capital input per capita reached 74.0 percent of the U.S. level. The investment slump that followed the collapse of the bubble economy in Japan at the end of the 1980s and the U.S. investment boom of the late 1990s widened the gap to 68.5 percent in 2000 and 66.2 percent in 2004. We conclude that deficient investment in Japan, especially after 1995, accounts for the remaining gap in input per capita.

Table 4 provides a decomposition of the U.S.-Japan gap in capital input per capita between capital stock per capita and capital quality. Capital quality is defined as capital input per unit of capital

stock and reflects the composition of the capital stock. In 1960 Japanese capital quality, relative to the U.S. was 61.2 percent, but this rose to 95.4 percent by 1973 and the gap had essentially closed by 1980. Capital quality in Japan attained 104.0 percent of the U.S. level in 1995, before the IT investment boom in the U.S., but declined to 95.5 percent of the U.S. level in 2000 and 93.8 percent in 2004. After 1973 the U.S.-Japan gap in capital stock per capita largely paralleled the gap in capital input per capita.

Table 5 compares the levels of capital deepening of IT- and Non-IT capital in the U.S. and Japan, where capital deepening is defined as an increase in capital input per hour worked. Capital deepening is an important source of growth in labor productivity. Capital input per hour worked in Japan rose from 19.3 percent of the U.S. level in 1960 to 67.1 percent in 2000 before falling back to 62.6 percent in 2004 as hours worked declined in the U.S. IT-capital deepening in Japan peaked in 90.2 percent of the U.S. level in 1990 before declining to 87.3 percent in 1995 and falling precipitously to 56.6 percent in 2004. The trend in Non-IT-capital deepening was similar to overall capital deepening.¹⁴

Table 5: Relative Levels of Capital Deepening

	1960	1973	1980	1990	1995	2000	2004
Capital Deepening	19.3	37.8	48.0	55.6	66.3	67.1	62.6
IT Capital Deepening	18.9	76.6	88.9	90.2	87.3	62.3	56.6
Non-IT Capital Deepening	17.3	34.2	44.1	53.3	65.7	70.9	67.2

Note: All figures present the relative values (Japan/U.S.) in each period.

Table 6 gives level comparisons of labor productivity and capital productivity, defined as output per hour worked and output per unit of capital stock, respectively. Labor productivity in Japan was only 21.2 percent of the U.S. level in 1960. The labor productivity gap shrank rapidly until 1995, when Japanese labor productivity reached almost 70 percent of the U.S. level. In sharp contrast Japanese capital productivity exceeded the U.S. level throughout the period 1960-2004, peaking at 119.9 percent in 1990. The trends in relative labor and capital productivity reflect relative factor supplies in the two economies. Japan has had a substantially higher labor/capital ratio than the U.S. throughout the period. The high labor/capital ratio is consistent with the low capital/labor PPPs presented in Table 1.

¹⁴ The trend of capital deepening in both countries is consistent with the long-term changes in relative prices for labor and capital inputs. The price for labor input in the U.S. increased annually at 5.1 percent for the period 1960-2004, by contrast with 3.1 percent for the price of capital input. In Japan, the growth rates in input prices for labor and capital were 6.3 and 1.9 percent, respectively. Thus the price for labor input increased relative to the price of capital input by more than 2.0 percent in the U.S. and 4.4 percent in Japan.

Table 6: Relative Levels of Labor Productivity and Capital Productivity

	1960	1973	1980	1990	1995	2000	2004
Labor Productivity	21.2	42.8	52.5	66.6	69.9	69.7	65.7
Capital Productivity	109.8	113.2	109.4	119.9	105.4	103.9	104.9

Note: All figures present the relative values (Japan/U.S.) in each period.

The sources of U.S.-Japan labor productivity gap are shown in Figure 5. The y-axis gives the logarithm of the relative productivity level. In 1960 lower Non-IT-capital deepening in Japan explained 50.1 percent of the U.S.-Japan labor productivity gap, while lower Japanese TFP explained 40.4 percent. The lower quality of labor input and lower IT-capital deepening contributed 8.8 percent and 0.7 percent, respectively. As a consequence of rapid capital deepening in Japan, the TFP gap has been the major source of lower labor productivity since the mid-1990s. Lower TFP explains 57.0 percent of the labor productivity gap in 2004, while Non-IT-capital deepening accounts for 37.3 percent.

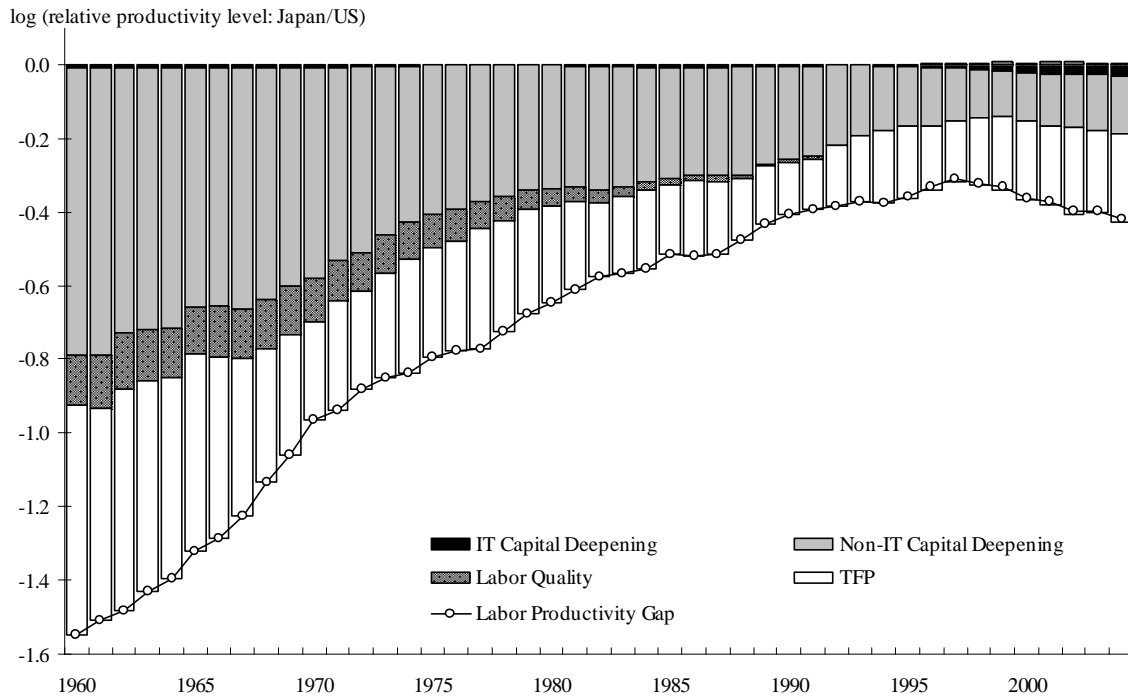


Figure 5: Sources of U.S.-Japan Labor Productivity Gap

iv. Industry Origins of the U.S.-Japan Productivity Gap

Figure 6 presents long-term trends of TFP gaps in manufacturing and non-manufacturing sectors. In 1960 both gaps were very large. However, the TFP gap for manufacturing had almost disappeared by

1990,¹⁵ so that the overall gap reflected lower TFP in non-manufacturing. The expansion of the TFP gap after 1990 was due mainly to deterioration in the relative TFP level in Japanese manufacturing.

Finally, we focus on the industry origins of the U.S.-Japan TFP gap. Figures 7 and 8 present industry-level TFP gaps and the contributions of each industry to the overall TFP gap for 1990 and 2004, respectively. Industries are ordered by the magnitude of their contributions to the TFP gap in each year. The first column in each figure gives the U.S.-Japan TFP gap, defined as the ratio of TFP in Japan to TFP in the U.S. Note that TFP gaps for Public Administration and Household sectors are zero by definition, since the outputs of these industries consist entirely of capital inputs. The second column gives the contribution of each industry to the aggregate TFP gap, using Domar weights from Equation (24) in the Methodological Appendix.

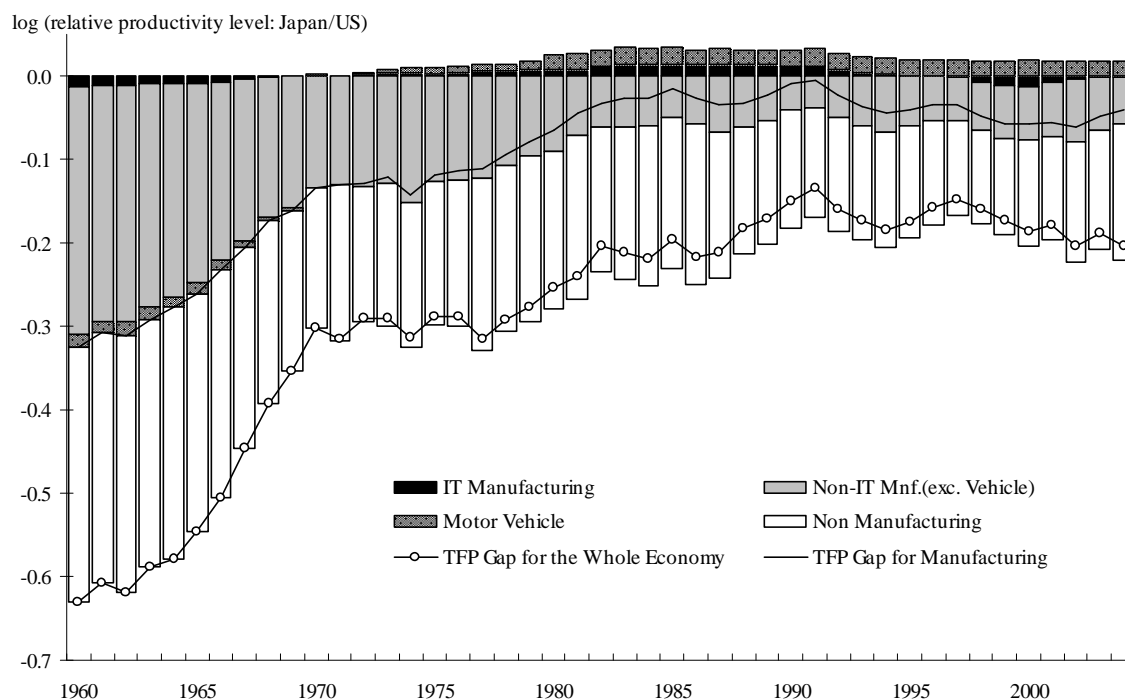


Figure 6: TFP Gap in Manufacturing and Non-Manufacturing during 1960-2004

¹⁵ Cameron (2005) analyzes the productivity convergence of Japanese manufacturing sector to the U.S. and estimates the TFP gap in 1989 as 91.3. Our result indicates a gap of 97.8 in the same year. The main source the gap may be that his research used the PPP estimates from one of our earlier studies. Our new estimates are based on a considerably revised framework, implementing the various concepts of PPP at the commodity level. On capital PPPs, our new estimates reflect the improved estimates of the relative annualization factors, based on the common asset classification, considering land as capital.

In 1990 the U.S.-Japan productivity gap reached a minimum for the period 1960-2004. Japanese TFP exceeded that in the U.S. for 17 of 40 industries, led by Motor Vehicles. Substantial positive contributions to Japanese TFP, relative to the U.S., were also made by Machinery, Finance and Insurance, and Electronic Components. Other Services accounted for nearly half of the overall TFP gap in 1990. Construction, Foods, Wholesale and Retail Trade and Electricity, all domestically oriented industries in Japan, also made sizable contributions to the overall TFP gap in 1990.

In 2004 Motor Vehicles continued to make the largest contributions to Japanese TFP, relative to the U.S. Communications and Real Estate emerged as major contributors. The lagging industries in 1990 retained their places at the bottom in 2004 with Agriculture, Forestry, and Fisheries. Wholesale and Retail Trade and Other Services, two industries largely sheltered from international competition, account for 25.1 and 22.5 percent, respectively, of the lower TFP level of the Japanese economy.

Figure 9 depicts the long-term trends in TFP levels in the U.S. and Japan for twelve particularly important industries. Productivity levels in each industry are normalized by the U.S. productivity level in 1960. In 1960 the TFP level in Agriculture, Forestry, and Fishery was only slightly inferior to the U.S., but the TFP gap widened after 1973, reflecting large differences in the scale of individual production units, as well as massive public investments in new agricultural technology in the U.S. Construction showed declining productivity trends in both economies with the U.S.-Japan TFP gap gradually closing.

We next consider three IT-producing sectors – Computers, Communications Equipment, and Electronic Components. The Japanese computer industry led its U.S. counterpart until the early 1990s, when U.S. TFP growth accelerated sharply. This was followed five years later by a similar acceleration in Japanese TFP growth. The deceleration of TFP growth in the U.S. industry after 2000 has reduced, but not eliminated, the U.S.-Japan gap. The Japanese telecommunications equipment industry achieved parity with the U.S. industry in the late 1970s but underwent a substantial acceleration in the mid-1990s and emerged with a sizable lead by 2004. The U.S. electronic components industry lagged behind the Japanese industry until the mid-1990s, but gained a substantial lead in the late 1990s that has shrunk but not entirely disappeared since the dot-com crash of 2000.

The U.S. started with an early lead in Other Electrical Machinery but the Japanese industry achieved parity by 1973. Relative productivity levels have been very similar over the following three decades with Japan emerging with a slight lead in 2004. The Japanese Motor Vehicles industry has led its U.S. counterpart since the early 1970s. However, the TFP gap has been fairly constant since the 1980s. The Japanese Communications industry first achieved parity with the U.S. industry around 1973, but established a sizable lead beginning in the early 1990s. All three industries experienced substantial gains in productivity throughout the period 1960-2004.

Finally, Wholesale and Retail Trade has contributed to the U.S. lead in overall TFP since 1960. The TFP gap has widened dramatically since the end of the 1990s, due to a slump in TFP growth in Japan and an acceleration of TFP growth in the U.S. The U.S. had a large productivity advantage over Japan in Finance and Insurance in 1960, but this shrank dramatically from 1960-1973 and then more gradually until the mid-1980s, when Japan emerged with an advantage for the first time. Both economies experienced a sharp acceleration in TFP growth in this industry, beginning in the late 1990s. Other Services has undergone a steady decline in TFP in both economies, but the U.S. has maintained an edge.

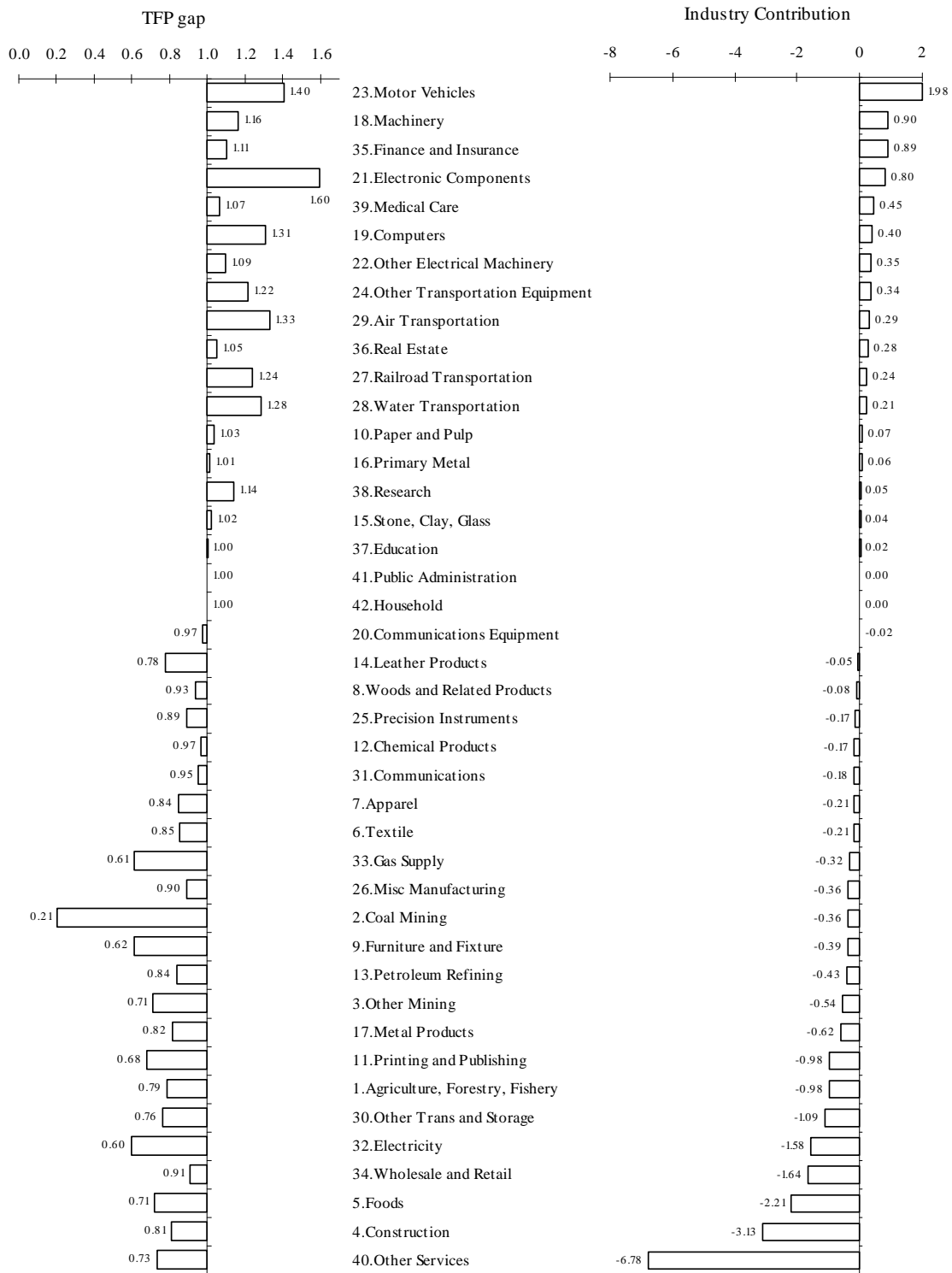


Figure 7: Industry Origins of TFP Gap in 1990

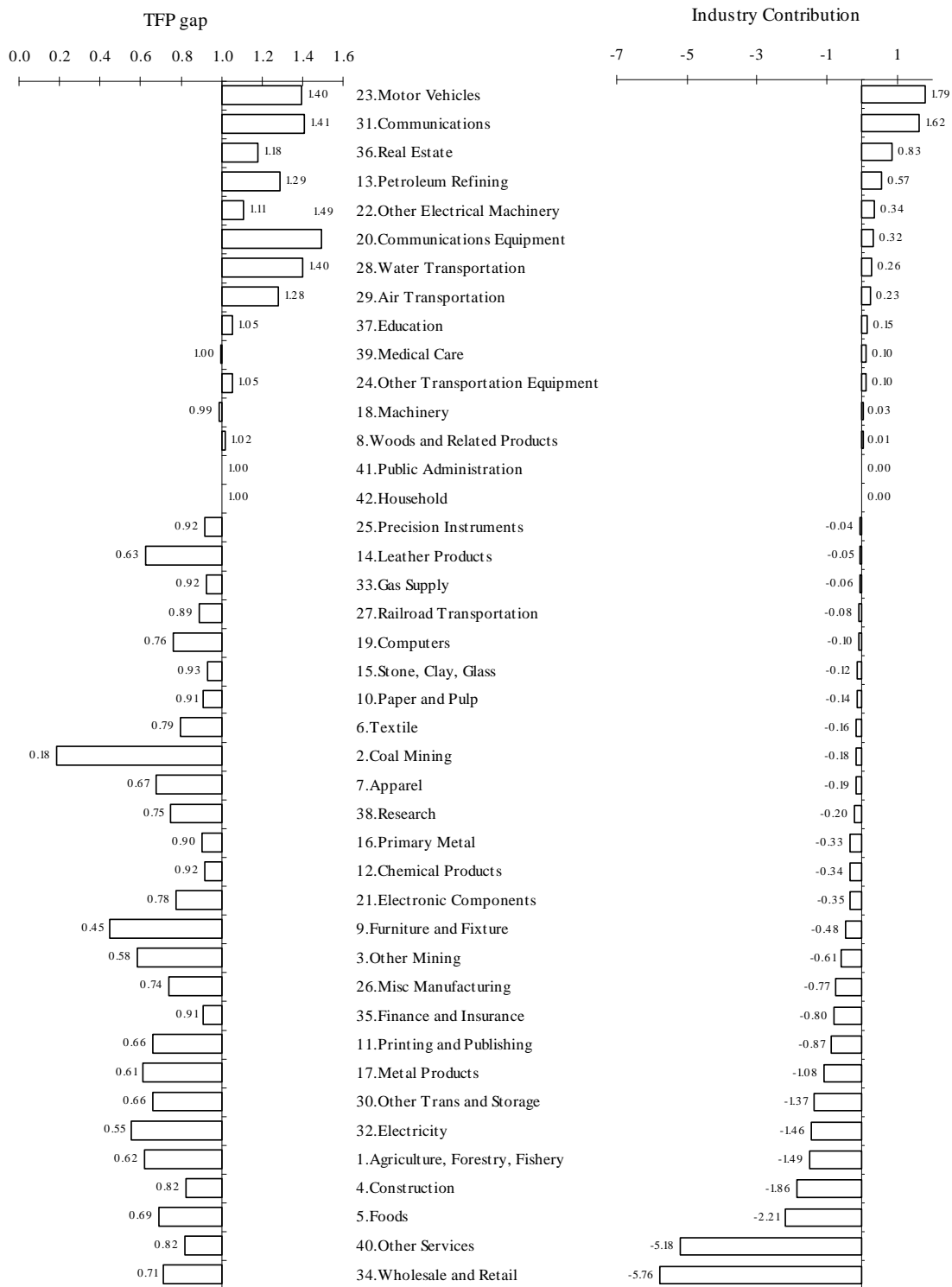


Figure 8: Industry Origins of TFP Gap in 2004

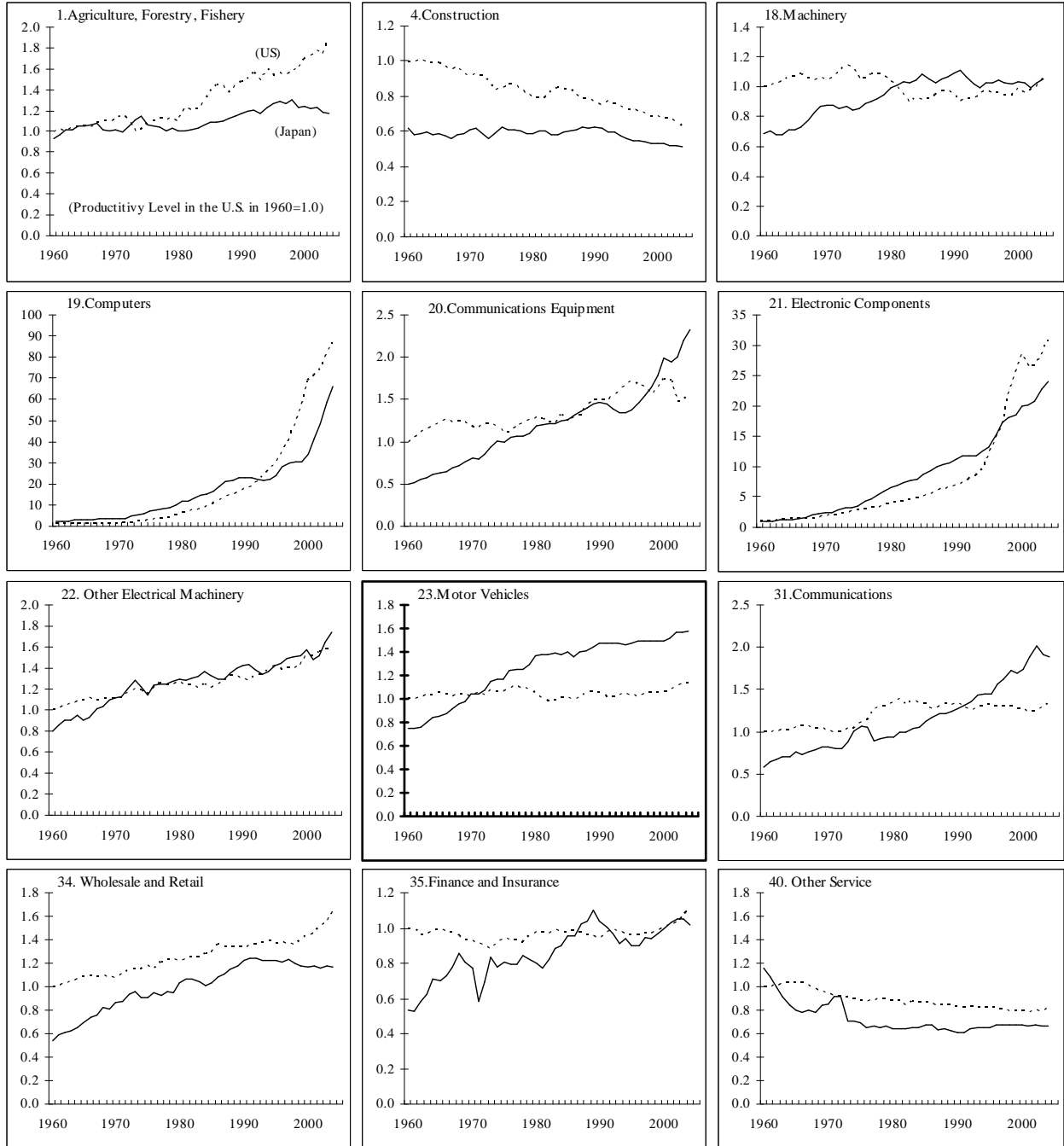


Figure 9: TFP Level Comparison in Selected Industries during 1960-2004

IV. Conclusion

A number of persistent differences between the U.S. and Japanese economies have emerged from our international comparisons, including substantial gaps in total factor productivity, defined as output per unit of input. Allocating the U.S.-Japan productivity gap to its origins at the level of individual industries is the first step in formulating policies to reduce or eliminate this gap. Both input per capita and total factor productivity are important sources of differences in output per capita between the U.S. and Japan. Japan has led the U.S. in hours worked per capita throughout the period 1960-2004 and now leads in labor quality, defined as labor input per hour worked, as well.

Capital input presents a sharp contrast with labor input in U.S.-Japan comparisons. Japan began with a very low level of capital input per capita, relative to the U.S. in 1960, but made substantial progress in closing the gap through 1995. At that point the Japanese economy was still suffering from the aftereffects of the collapse of the bubble economy of the 1980s, while the U.S. was beginning a massive investment boom in IT equipment and software. Japan has lost considerable ground in capital input per capita, relative to the U.S., after 1995, eventually reverting to the relative levels of the mid-1980s.

Japan has overcome the impact of the very substantial over-valuation of the yen that followed the Plaza Accord of 1985. However, this has required a decade of domestic deflation, accompanied by depressed investment levels and, especially, by insufficient investment in IT equipment and software. Japanese TFP growth has revived, but continues to lag behind the U.S. Japan has been very successful in exploiting new information technology in Communications equipment and Communications services. The impressive rebound of TFP growth in the Japanese Computer and Electronic components industries will continue to stimulate high levels of investment in information technology equipment and software by IT-using industries in Japan.

Finally, Japan succeeded in raising its relative level of TFP from 52.4 percent of the U.S. level in 1960 to 86.1 percent in 1990. At that point seventeen of the 40 industries included in our U.S.-Japan comparisons had higher levels of TFP in Japan and the Japanese manufacturing sector as a whole had achieved parity with its U.S. counterpart. Japan's TFP growth stalled during the decade 1990-2000. U.S. TFP increased rapidly during the period 1995-2000 and then accelerated sharply from 2000-2004, as Japan's TFP growth began to revive. By 2004 only twelve Japanese industries had higher TFP than their U.S. counterparts. Wholesale and Retail Trade and Other Services, two industries largely sheltered from international competition, stand out as opportunities for substantial improvement in Japanese TFP, relative to the U.S.

Methodological Appendix

i. Relative Price, Quantity, and Quality

(a) Elementary Level

We start with the definition of value, price, and quantity for output and inputs of capital, labor, energy, and materials (K,L,E,M) at the elementary level. The nominal value $V_{ijt}^{\theta,c}$ of industry j in country c , evaluated by own-currency unit in each country, is defined as follows:

$$(3) \quad V_{ijt}^{\theta,c} = P_{ijt}^{\theta,c} X_{ijt}^{\theta,c} = \hat{P}_{ijt}^{\theta,c} \hat{X}_{ijt}^{\theta,c},$$

where $P_{ijt}^{\theta,c}$ is the price index ($P_{ijtT}^{\theta,c} = 1.0$ as of a base year T) and $X_{ijt}^{\theta,c}$ is the quantity index. The suffix i represents a subscript for the elementary components in each category ($\theta = Y, K, L, E, M$). For example, in the case of labor input ($\theta = L$), the subscript i stands for categories cross-classified by sex, age, education, and class of worker. Although the categories are different for each θ , we use the same subscript for simplicity.¹⁶ In comparing economies the industry classification j and elementary categories i are assumed to be identical, reflecting the common classifications we have established for the U.S. and Japan.

The last term in Equation (3) defines measures of price and quantity, $\hat{P}_{ijt}^{\theta,c}$ and $\hat{X}_{ijt}^{\theta,c}$, which are based on the same units in each economy. To clarify this we define the elementary quality $Q_{ij}^{\theta,c}$ from the quantities and prices as follows:

$$(4) \quad X_{ijt}^{\theta,c} = Q_{ij}^{\theta,c} \hat{X}_{ijt}^{\theta,c},$$

$$(5) \quad \hat{P}_{ijt}^{\theta,c} = Q_{ij}^{\theta,c} P_{ijt}^{\theta,c}.$$

At the elementary level the quality $Q_{ij}^{\theta,c}$ represents a base-year unit price with constant quality between the two economies, evaluated in terms of the currency units in each economy. This can be defined as the quantity purchased by one unit of the currency of the base economy in a base year. For example, let the U.S. be the base economy and “one-dollar’s worth” be the quantity unit, equivalent to the base-year value of one dollar in the U.S. This provides the physical unit for each element of i applied to both economies. The cost of purchasing one-dollar’s worth in each economy provides the unit price, $\hat{P}_{ijt}^{\theta,c}$. Although the quantity, $X_{ijt}^{\theta,c}$, is not directly comparable between the two economies, the quality-adjusted quantity, $\hat{X}_{ijt}^{\theta,c}$,

provides a comparable quantity measure. Also, $\hat{P}_{ijt}^{\theta,c}$ and $Q_{ij}^{\theta,c}$ provide comparable measures of the quality-adjusted unit price and quality with taking the exchange rates between currencies into account.¹⁷

For bilateral comparisons between the U.S. ($c=U$) and Japan ($c=J$), we define the quality-adjusted quantity and price in Japan, using the U.S. quality for each element i . Equations (3)-(5) in Japan are redefined as follows:

$$(6) \quad V_{ijt}^{\theta,J|U} = P_{ijt}^{\theta,J|U} X_{ijt}^{\theta,J|U} = \hat{P}_{ijt}^{\theta,J|U} \hat{X}_{ijt}^{\theta,J},$$

$$(7) \quad X_{ijt}^{\theta,J|U} = Q_{ij}^{\theta,U} \hat{X}_{ijt}^{\theta,J},$$

$$(8) \quad \hat{P}_{ijt}^{\theta,J|U} = Q_{ij}^{\theta,U} P_{ijt}^{\theta,J|U},$$

where $V_{ijt}^{\theta,J|U} = V_{ijt}^{\theta,J} / e_t$ and $\hat{P}_{ijt}^{\theta,J|U} = \hat{P}_{ijt}^{\theta,J} / e_t$, using the annual average exchange rate e_t (Japanese yen per U.S. dollar). Equation (7) represents the quality-adjusted quantity measure in Japan, $X_{ijt}^{\theta,J|U}$, which is directly comparable to the U.S. quantity measure, $X_{ijt}^{\theta,U}$, applying U.S. quality $Q_{ij}^{\theta,U}$. Equation (8) represents the quality-adjusted price measure in Japan, $\hat{P}_{ijt}^{\theta,J|U}$, which is comparable to the U.S. price index, $P_{ijt}^{\theta,U}$, adjusting for the US-Japan differences in quality and the exchange rate.

We define relative indexes for value, price, quantity, and quality between the U.S. and Japan as:

$$(9) \quad RV_{ijt}^{\theta} = \frac{V_{ijt}^{\theta,J|U}}{V_{ijt}^{\theta,U}}, RP_{ijt}^{\theta} = \frac{P_{ijt}^{\theta,J|U}}{P_{ijt}^{\theta,U}}, R\hat{P}_{ijt}^{\theta} = \frac{\hat{P}_{ijt}^{\theta,J|U}}{\hat{P}_{ijt}^{\theta,U}},$$

$$RX_{ijt}^{\theta} = \frac{X_{ijt}^{\theta,J|U}}{X_{ijt}^{\theta,U}}, R\hat{X}_{ijt}^{\theta} = \frac{\hat{X}_{ijt}^{\theta,J}}{\hat{X}_{ijt}^{\theta,U}}, RQ_{ij}^{\theta} = \frac{Q_{ij}^{\theta,J|U}}{Q_{ij}^{\theta,U}},$$

where $Q_{ij}^{\theta,J|U} = Q_{ij}^{\theta,J} / e_T$, using the base-year exchange rate. At the elementary level the two measures for relative price and quantity coincide, $RP_{ijt}^{\theta} = R\hat{P}_{ijt}^{\theta}$ and $RX_{ijt}^{\theta} = R\hat{X}_{ijt}^{\theta}$, and the relative quality, RQ_{ij}^{θ} , is constant over time periods. The relative value, RV_{ijt}^{θ} , is identical with $RP_{ijt}^{\theta} RX_{ijt}^{\theta}$ and $R\hat{P}_{ijt}^{\theta} R\hat{X}_{ijt}^{\theta}$.

The purchasing power parities for output and KLEM inputs at the elementary level are defined as follows:

¹⁶ As described in Section II, the number of elementary categories, commonly defined for the U.S. and Japan, is 33 for capital inputs (K), 1596 for labor inputs (L), and 164 for intermediate inputs (E, M).

¹⁷ If we use one-dollar's worth as an unit of quantity, then quality in the U.S., $Q_{ij}^{\theta,U}$, is identical to one for all i of θ . In the case of labor input, we assume hours worked provide an appropriate unit for one-dollar's worth for labor

$$(10) \quad PPP_{ijt}^{\theta} = e_t RP_{ijt}^{\theta} = \frac{\hat{P}_{ijt}^{\theta,J}}{\hat{P}_{ijt}^{\theta,U}}.$$

Although the relative price depends on the exchange rate, the purchasing power parity (PPP) is independent of it. The PPP can be interpreted as the relative cost of purchasing the one-dollar's worth in each economy. If PPP_{ijt}^{θ} in each category $\theta = Y, K, L, E, M$ is less than the exchange rate, that is, its bilateral relative price, RP_{ijt}^{θ} , is less than one, the price in Japan is lower than the price in the U.S. As of the base year T , the relative price coincides with the relative quality at the elementary level, $RP_{ijt}^{\theta} = RQ_{ij}^{\theta}$. Thus the quality-adjusted quantity measure in Japan in Equation (7) is measured using the base-year PPP:

$$(11) \quad X_{ijt}^{\theta,J|U} = \frac{X_{ijt}^{\theta,J}}{PPP_{ijt}^{\theta}}.$$

(b) Industry Level

We move to the industry-level formulation by aggregating elementary components. The value $V_{jt}^{\theta,c}$ in j is described as the sum of elementary categories in $\theta = Y, K, L, E, M$, evaluated in the currency of each economy:

$$(12) \quad V_{jt}^{\theta,c} = P_{jt}^{\theta,c} X_{jt}^{\theta,c} = \hat{P}_{jt}^{\theta,c} \hat{X}_{jt}^{\theta,c} = \sum_i P_{ijt}^{\theta,c} X_{ijt}^{\theta,c}.$$

For output and KLEM inputs the industry-level translog quantity $X_{jt}^{\theta,c}$ and unweighted-sum $\hat{X}_{jt}^{\theta,c}$ are defined as:

$$(13) \quad \Delta \ln X_{jt}^{\theta,c} = \sum_i \bar{v}_{ijt}^{\theta,c} \Delta \ln X_{ijt}^{\theta,c},$$

$$(14) \quad \hat{X}_{jt}^{\theta,c} = \sum_i \hat{X}_{ijt}^{\theta,c},$$

where the weights $\bar{v}_{ijt}^{\theta,c}$ are the two-period average shares of the elementary components in the nominal value for each economy. For the base-year T the translog quantity index, $X_{jT}^{\theta,c}$, is set equal to $V_{jT}^{\theta,c}$.

Next, to define comparable measures between the two economies at the industry level, we define bilateral relative measures for price, quantity, and quality. The industry-level PPP for each θ is assumed to be a translog index of the elementary level PPPs, as follows:

$$(15) \quad \ln PPP_{jt}^{\theta} \equiv \sum_i \bar{w}_{ijt}^{\theta} \ln PPP_{ijt}^{\theta},$$

input at the elementary level, as described later; then quality is defined by base-year labor compensation per hour

where the weights \bar{w}_{jt}^θ are the two-country average shares of the elementary components in the nominal value for each θ . The industry-level relative price is defined as $RP_{jt}^\theta = PPP_{jt}^\theta / e_t$. Using the base-year industry-level PPP, we define quantity in Japan, $X_{jt}^{\theta, JU}$, which is comparable to the U.S. industry-level quantity, $X_{jt}^{\theta, U}$, as follows:

$$(16) \quad X_{jt}^{\theta, JU} = \frac{X_{jt}^{\theta, J}}{PPP_{jT}^\theta}.$$

Using the quantity index, $X_{jt}^{\theta, JU}$, we redefine the nominal value in Equation (12) and the industry-level quality measure in Japan as follows:

$$(17) \quad V_{jt}^{\theta, JU} = P_{jt}^{\theta, JU} X_{jt}^{\theta, JU} = \hat{P}_{jt}^{\theta, JU} \hat{X}_{jt}^{\theta, J},$$

$$(18) \quad X_{jt}^{\theta, JU} = Q_{jt}^{\theta, JU} \hat{X}_{jt}^{\theta, J},$$

$$(19) \quad \hat{P}_{jt}^{\theta, JU} = Q_{jt}^{\theta, JU} P_{jt}^{\theta, JU},$$

where $V_{jt}^{\theta, JU} = V_{jt}^{\theta, J} / e_t$.

The two measures of price in Japan, $P_{jt}^{\theta, JU}$ and $\hat{P}_{jt}^{\theta, JU}$, are comparable to the U.S. industry-level prices, $P_{jt}^{\theta, U}$ and $\hat{P}_{jt}^{\theta, U}$, respectively. These measures are defined in Equation (19) to be consistent with the corresponding quantities, $X_{jt}^{\theta, JU}$ in (16) and $\hat{X}_{jt}^{\theta, J}$ in (14), respectively. Equations (18) and (19) provide the industry-level quality index in Japan, $Q_{jt}^{\theta, JU}$, which is comparable to the U.S. quality, $Q_{jt}^{\theta, U}$.¹⁸ The elementary-level quality defined in Equations (7) and (8) is constant over periods, but the industry-level quality can change because of changes in composition.

At the industry level relative indexes for value, price, quantity, and quality between the U.S. and Japan are defined as follows:

evaluated in the currency of each economy.

¹⁸ The Japan's quality, $Q_{jt}^{\theta, JU}$, is also written as $Q_{jt}^{\theta, J} / PPP_{jT}^\theta$, where $Q_{jt}^{\theta, J}$ is defined by $X_{jt}^{\theta, J} / \hat{X}_{jt}^{\theta, J}$. If we define one-dollar's worth for all i as a unit of quantity, the U.S. industry-level quality in the U.S., $Q_{jT}^{\theta, U}$, is identical to one in the base year T .

$$(20) \quad RV_{jt}^\theta = \frac{V_{jt}^{\theta,J|U}}{V_{jt}^{\theta,U}}, RP_{jt}^\theta = \frac{P_{jt}^{\theta,J|U}}{P_{jt}^{\theta,U}}, R\hat{P}_{jt}^\theta = \frac{\hat{P}_{jt}^{\theta,J|U}}{\hat{P}_{jt}^{\theta,U}},$$

$$RX_{jt}^\theta = \frac{X_{jt}^{\theta,J|U}}{X_{jt}^{\theta,U}}, R\hat{X}_{jt}^\theta = \frac{\hat{X}_{jt}^{\theta,J}}{\hat{X}_{jt}^{\theta,U}}, RQ_{jt}^\theta = \frac{Q_{jt}^{\theta,J|U}}{Q_{jt}^{\theta,U}},$$

The relative value RV_{jt}^θ is identical to $RP_{jt}^\theta RX_{jt}^\theta$ and $R\hat{P}_{jt}^\theta R\hat{X}_{jt}^\theta$. The two elementary-level measures for price and quantity coincide as $RP_{ijt}^\theta = R\hat{P}_{ijt}^\theta$ and $RX_{ijt}^\theta = R\hat{X}_{ijt}^\theta$, but the two measures for industry-level relative price and quantity are not identical. They are written as:

$$(21) \quad RX_{jt}^\theta = RQ_{jt}^\theta R\hat{X}_{jt}^\theta,$$

$$(22) \quad R\hat{P}_{jt}^\theta = RQ_{jt}^\theta RP_{jt}^\theta.$$

Only in the special case of equal PPPs across all elementary categories in each θ , the relative quality RQ_{jt}^θ is unity and the two measures for industry-level relative price and quantity coincide.

ii. Relative Productivity

Finally, we formulate the productivity gap, using relative quantities in Equation (20). Under the assumptions of constant returns to scale and competitive markets in both countries, the relative measure of total factor productivity (TFP) between the U.S. and Japan is defined as a translog index:

$$(23) \quad RT_{jt} \equiv \ln RX_{jt}^Y - \sum_{\theta=KLEM} \bar{w}_{jt}^\theta \ln RX_{jt}^\theta = \sum_{\theta=KLEM} \bar{w}_{jt}^\theta \ln RP_{jt}^\theta - \ln RP_{jt}^Y,$$

where the weights, \bar{w}_{jt}^θ , are the average, two-country shares of KLEM inputs in the value of output, which is assumed to be equal to the total compensation for all four KLEM inputs. The key to defining the productivity gap is the base-year PPPs for output and the KLEM inputs, defined in Equation (16).

We define the aggregate TFP gap as the Domar-weighted industry-level TFP gap:

$$(24) \quad RT_t \equiv \sum_j \bar{d}_{jt} \ln RT_{jt},$$

where \bar{d}_{jt} weights are the average, two-country shares of the Domar weights. These weights multiply industry productivity growth by the share of industry value added in GDP and divide by the share of industry value added in industry output. These weights capture the relative importance of the industry in

GDP and the relative importance of value added in the industry's output.¹⁹ Equation (24) provides the framework for quantifying the industry origins of the productivity gap between the U.S. and Japan.

References

- Ark, Bart van and Dirk Pilat (1993) "Productivity Levels in Germany, Japan, and the United States* Differences and Causes," *Brookings Papers on Economic Activity, Microeconomics*, 1-48.
- Cameron, Gavin (2005), "The Sun Also Rises: Productivity Convergence Between Japan and the USA," *Journal of Economic Growth*, 10, 387-408.
- Inklaar, Robert and Marcel P. Timmer (2007), "International Comparisons of Industry Output, Inputs, and Productivity Levels: Methodology and New Results," *Economic Systems Research*, this issue.
- Jorgenson, Dale W., Mun S. Ho, and Kevin J. Stiroh (2005). *Information Technology and the American Growth Resurgence*, Cambridge, The MIT Press.
- Jorgenson, Dale W., Mun S. Ho, Jon D. Samuels, and Kevin J. Stiroh (2007), "Industry Origins of the American Growth Resurgence," *Economic Systems Research*, this issue.
- Jorgenson, Dale W., and Masahiro Kuroda (1990). "Productivity and International Competitiveness in Japan and the United States, 1960-1985," in C.R. Hulten, eds., *Productivity Growth in Japan and the United States*, University of Chicago Press, 29-55.
- Jorgenson, Dale W., Masahiro Kuroda, and Mieko Nishimizu (1987), "Japan-U.S. Industry-Level Productivity Comparison, 1960-1979," *Journal of the Japanese and International Economies*, 1, 1-30.
- Jorgenson, Dale W., and Koji Nomura (2005). "The Industry Origins of Japanese Economic Growth," *Journal of the Japanese and International Economies*, 19, 482-542.
- Kuroda, Masahiro and Koji Nomura (1999). "Productivity Comparison and International Competitiveness," *Journal of Applied Input-Output Analysis*, 5, 1-37.
- Nomura, Koji (2004). *Measurement of Capital and Productivity in Japan*, Tokyo, Keio University Press, (in Japanese).
- Nomura, Koji and Kozo Miyagawa (1999). "Measurement of US-Japan Relative Prices of Commodities," *Keizai Tokei Kenkyu (Research on Economic Statistics)*, Vol.27, No.3. (in Japanese).
- Nomura, Koji and Jon D. Samuels (2003). "Wage Differentials and Structure in the U.S. and Japan, 1960-2000: Purchasing Power Parities for Labor Input," *RCGW Discussion Paper*, Development Bank of Japan.

¹⁹ For further discussion of Domar weights, see Jorgenson and Nomura (2005), Section V.